

HP5065A battery pack
v 1.0

"Option 002 provides the HP5065A with at least 10 minutes of standby power so the standard can be moved; for example from one room to another. Maximum recharge (FAST CHARGE) takes 16 to 18 hours. Necessary charge time can be calculated on the basis of 1.5 hours charge time per minute of standby operation up to a maximum of 16 to 18 hours. The front panel BATTERY warning light indicates three battery circuit conditions:

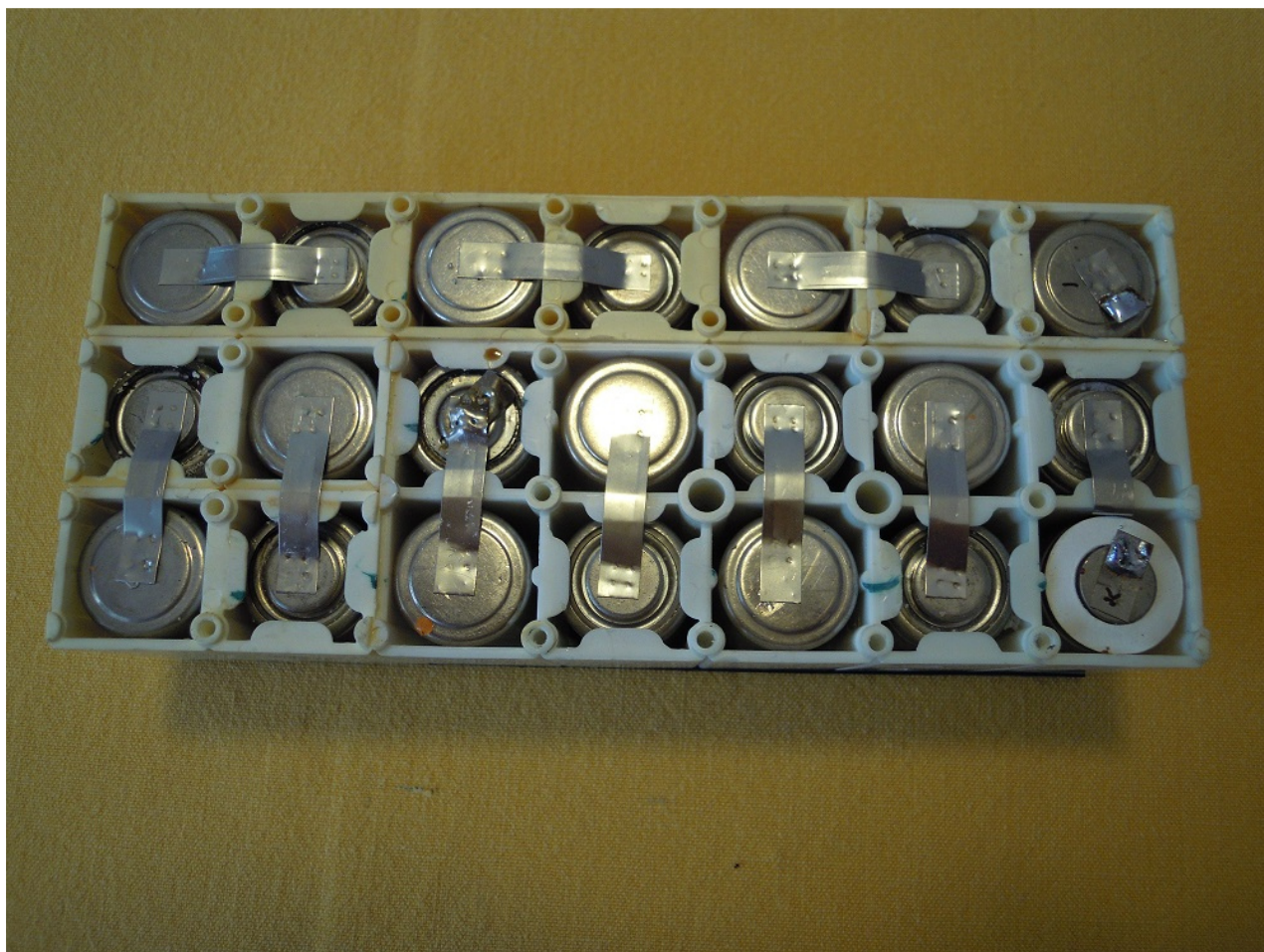
- a. Flashes on and off when instrument is powered from internal battery supply (when disconnected from line power).
- b. On when the battery is being FAST CHARGED (with 5065A connected to line power).
- c. Off with Battery switch at FLOAT (continuous trickle charge).

If the instrument must be turned off for any reason, remove ac power and then momentarily disconnect F4 (this is the fuse located over the battery). In this manner, relay A2K1 is unlatched to de-energized the circuits and prevent battery drain."

From 5065A Rubidium Frequency Standard manual 05065-9041 page 3-11



The battery pack is housed in a plastic box in three row 7 battery each for a total of 21 single Nicad 1.2 Volt 1.25 Amp. Hr. The serial connection of the elements provides a voltage rating of 25.2 Volts.



www.timeok.it
timeok@timeok.it